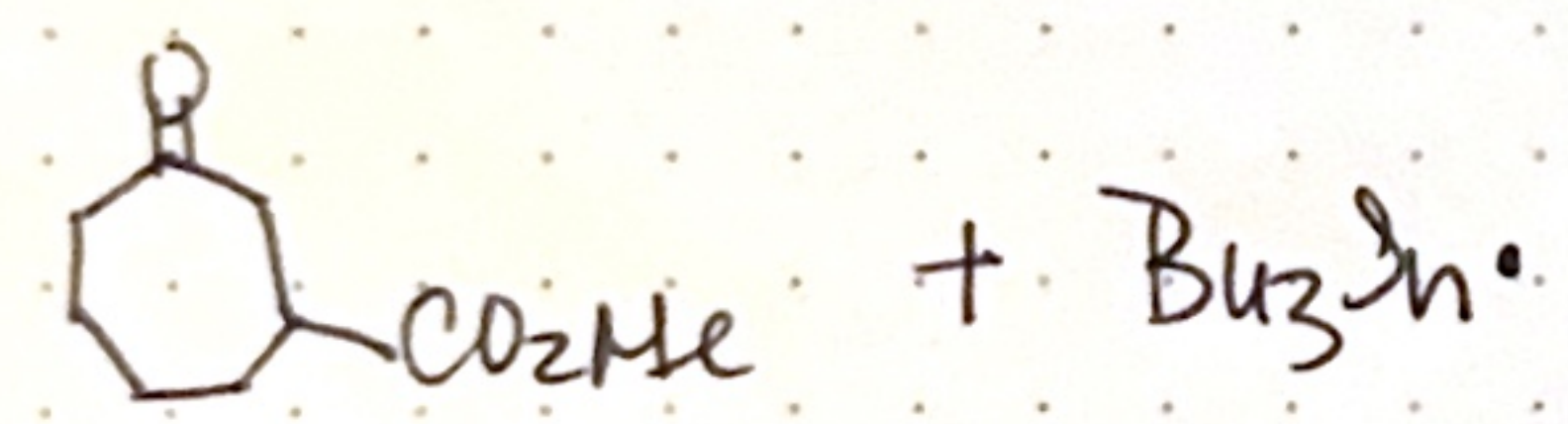
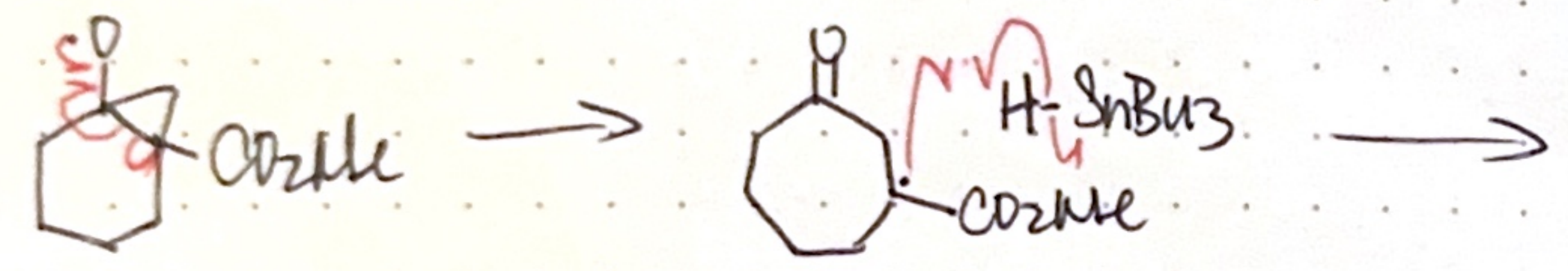
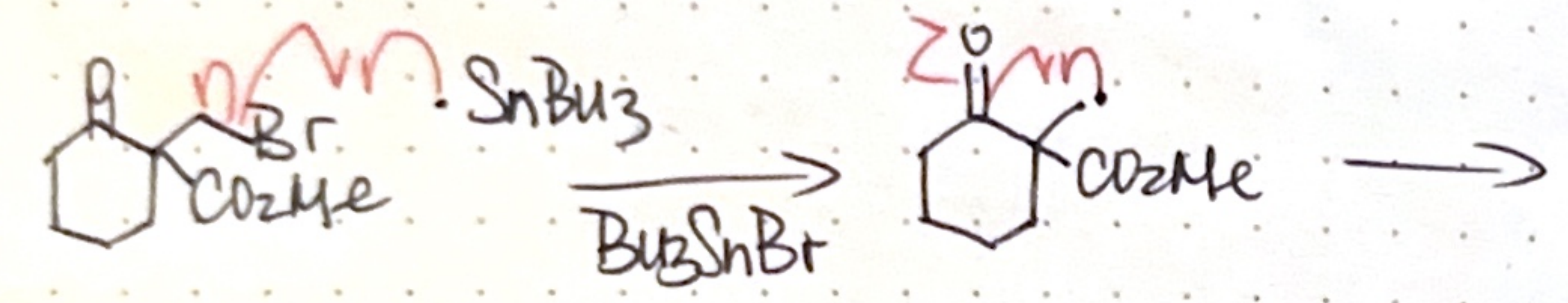
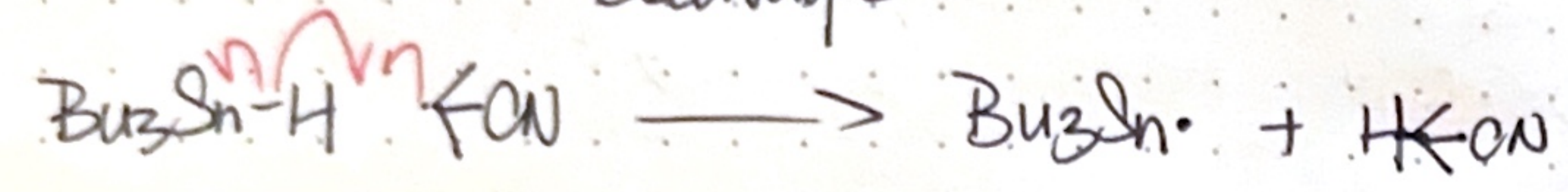
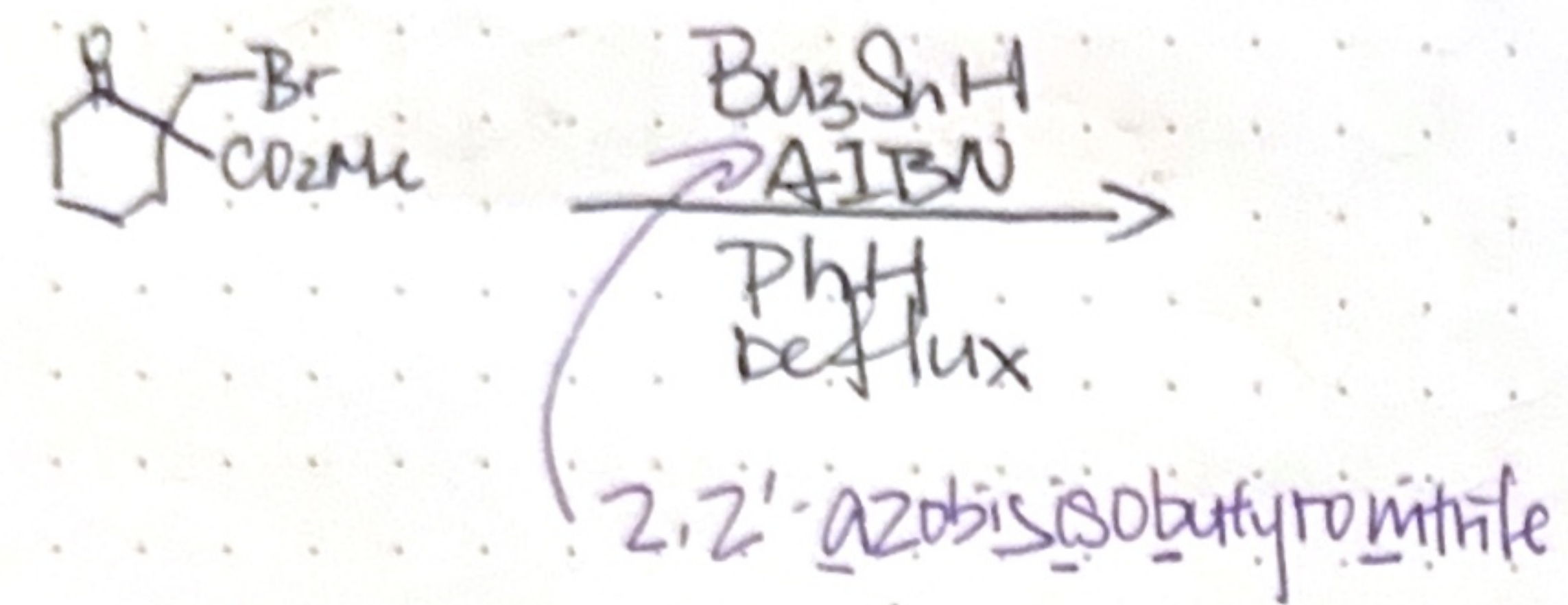
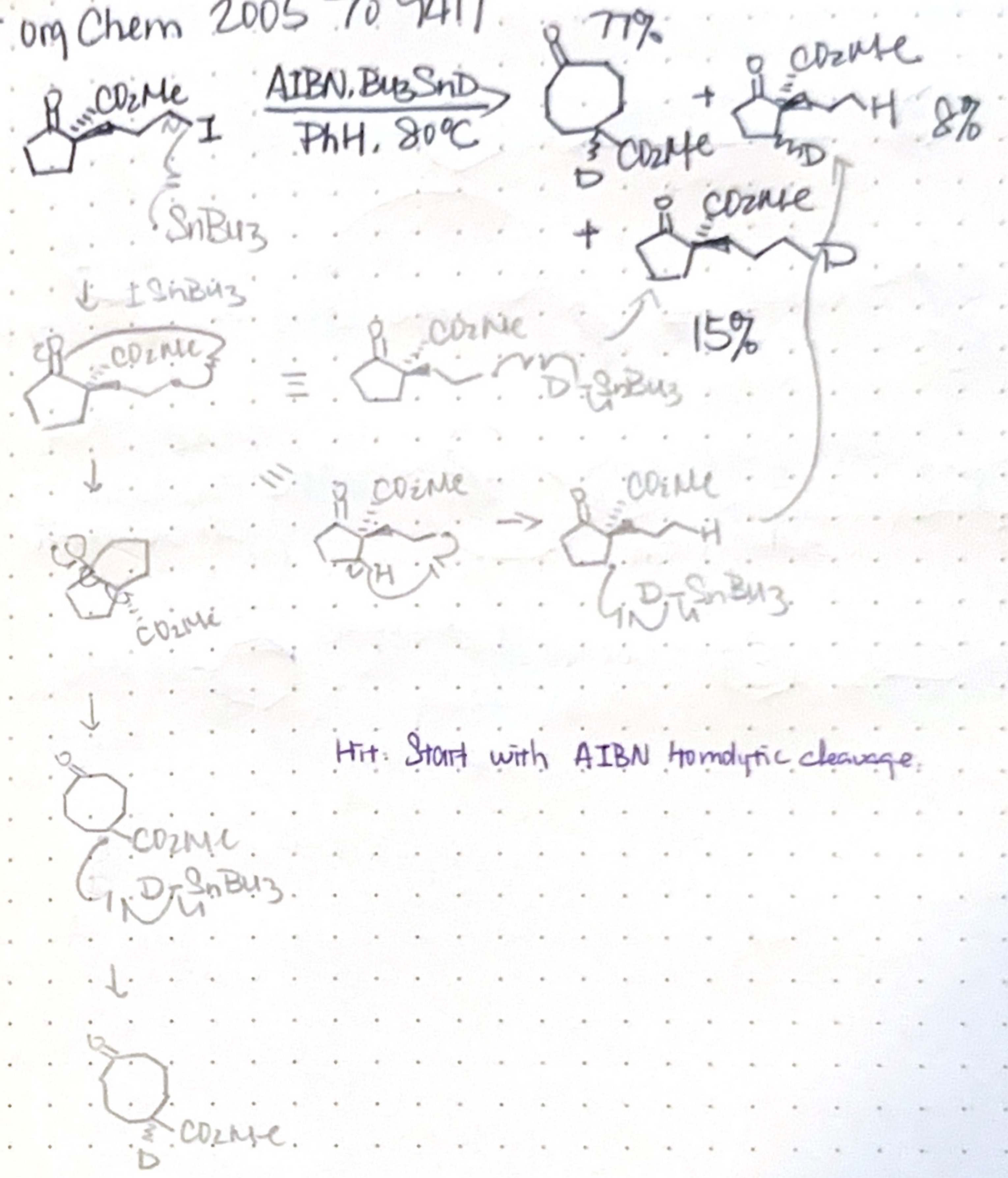


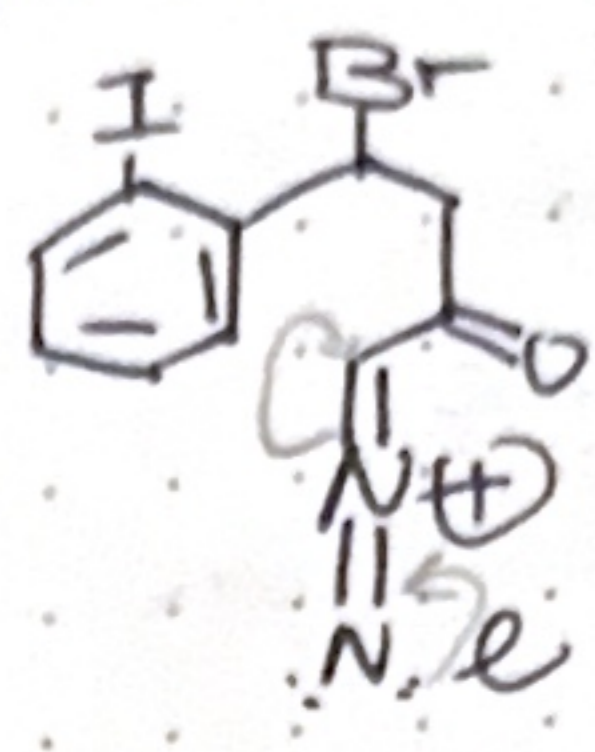
Donal-Beckwith ring expansion



J. Org Chem 2005 70 9417



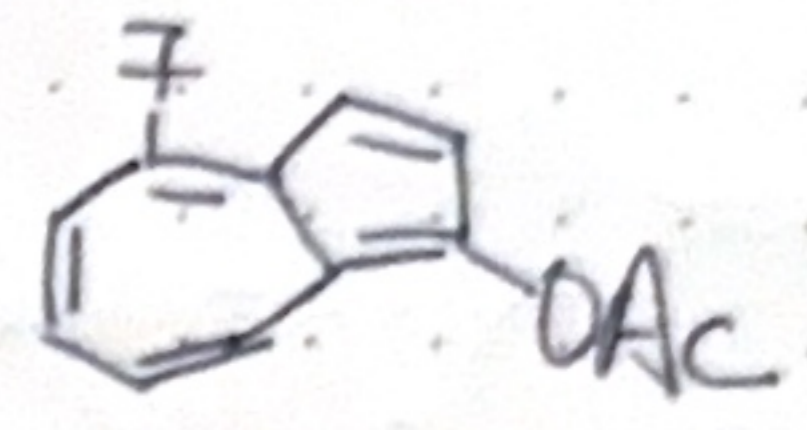
JOC 2004, 69, 8652



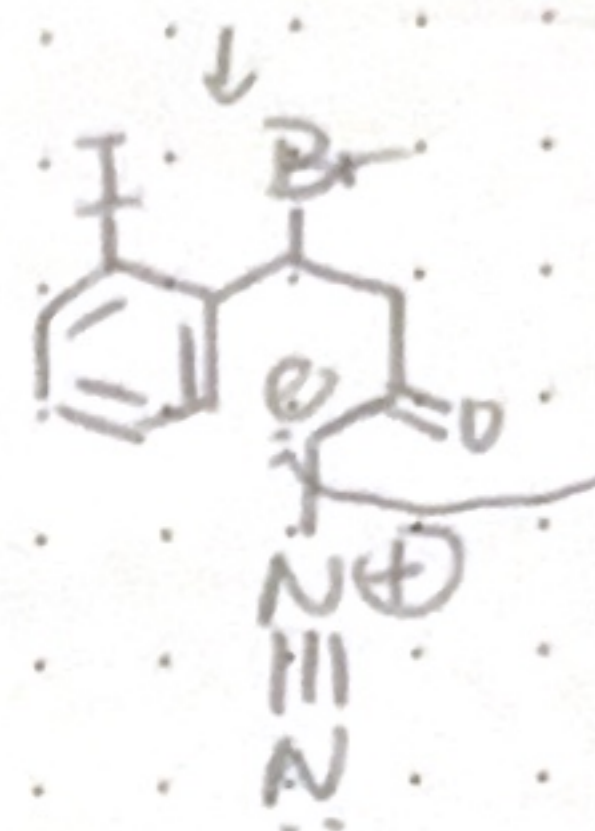
Cat. $Rh_2(OAc)_4 \cdot DMAP$

Ac_2O, CH_2Cl_2

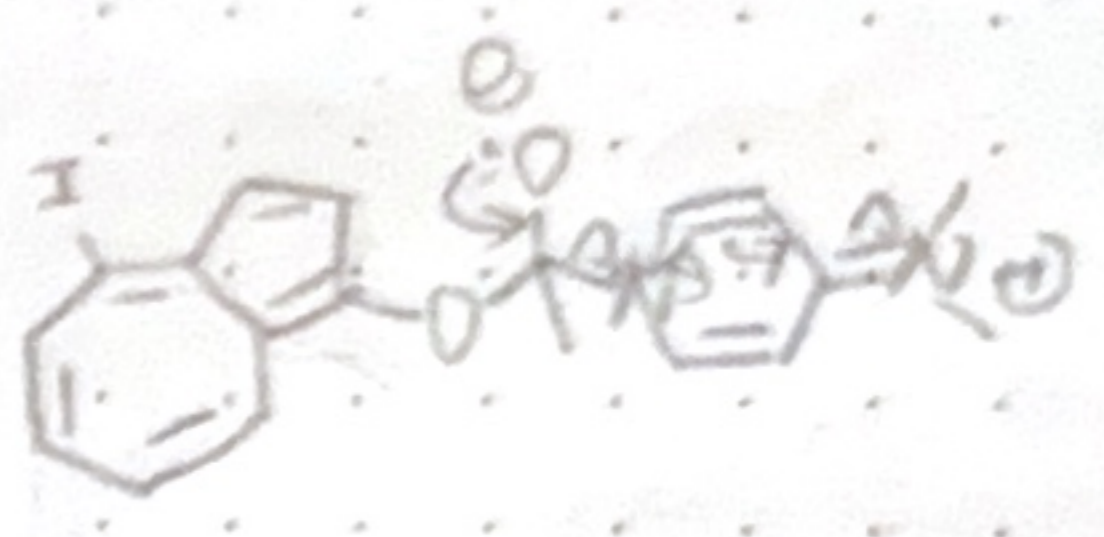
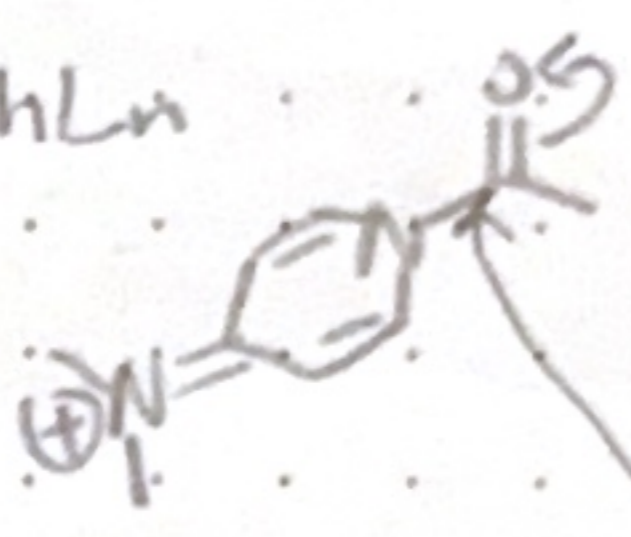
73%



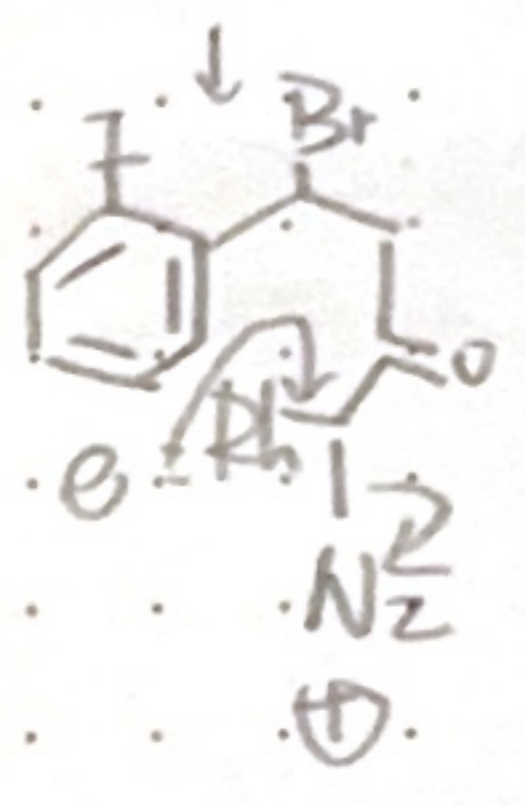
-DMAP



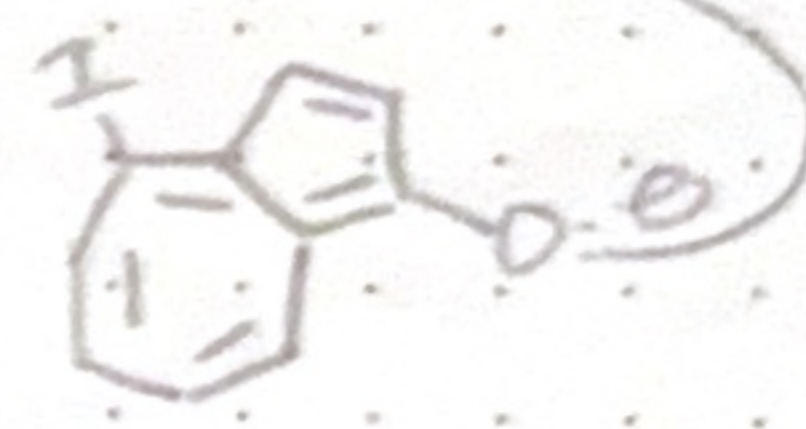
$RhLn$



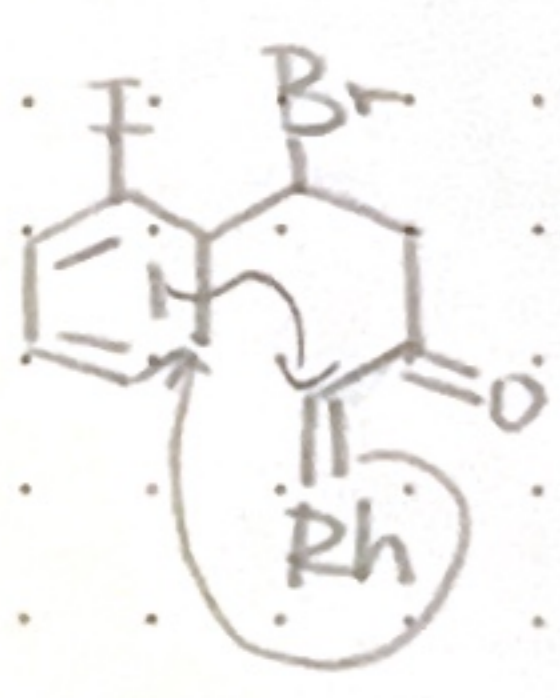
$\downarrow -AcO^-$



Hit: going thru a metal carbeneoid

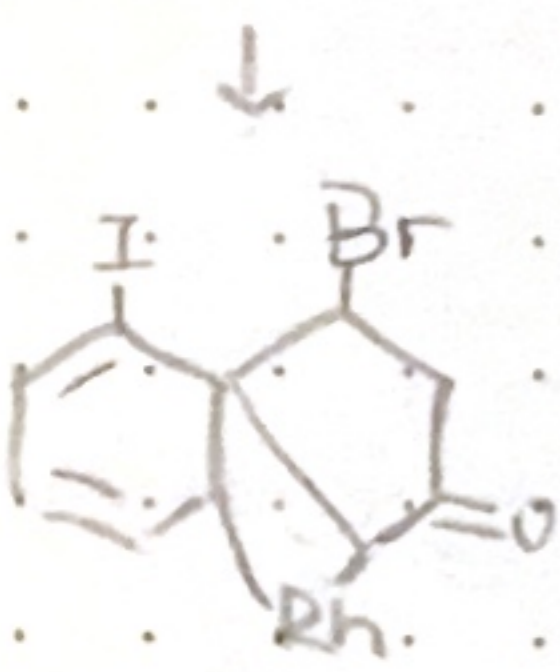


$\downarrow -N_2$

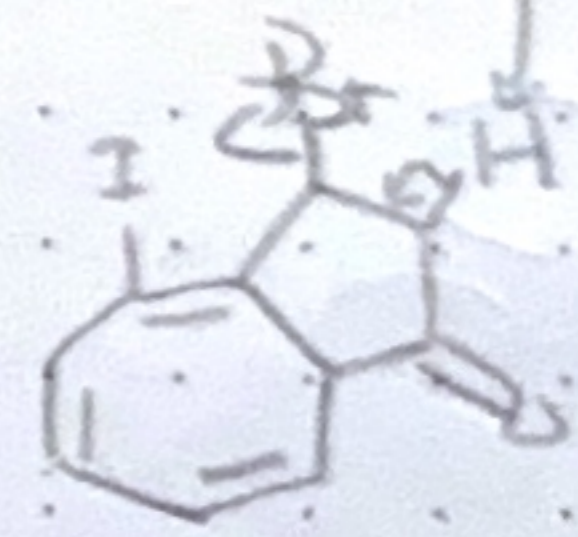
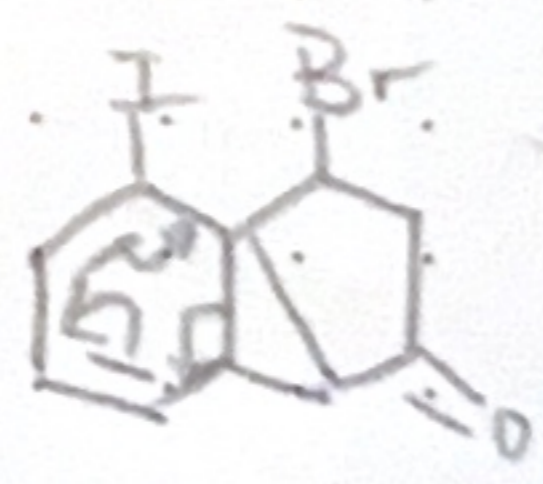


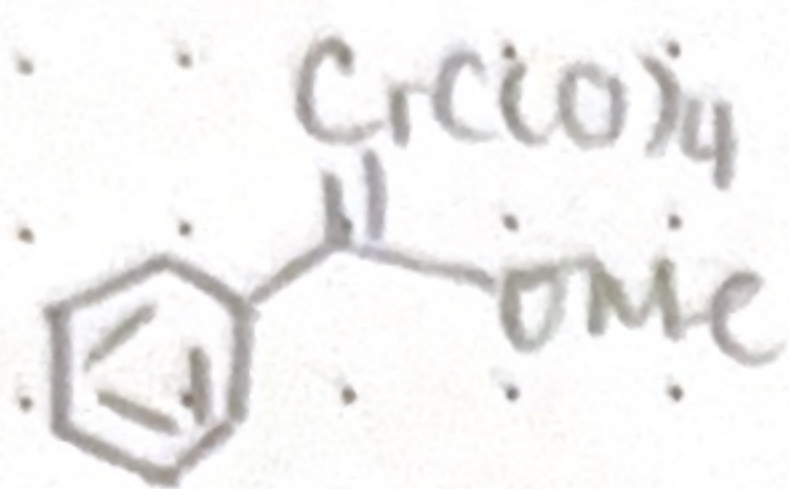
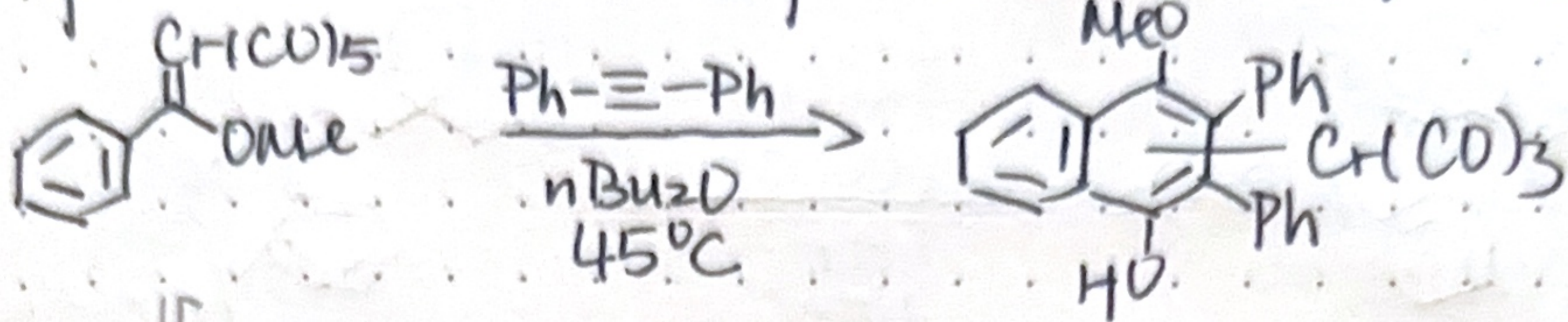
AcO^-

B^-

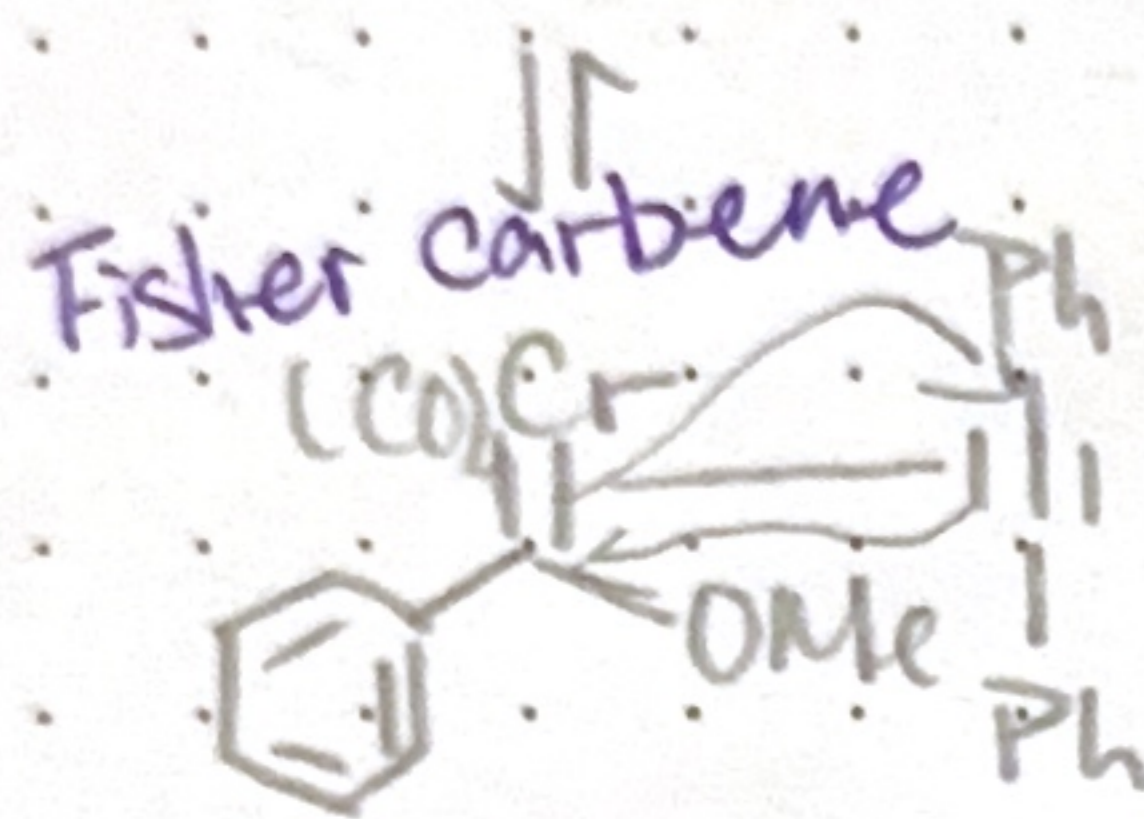


RE

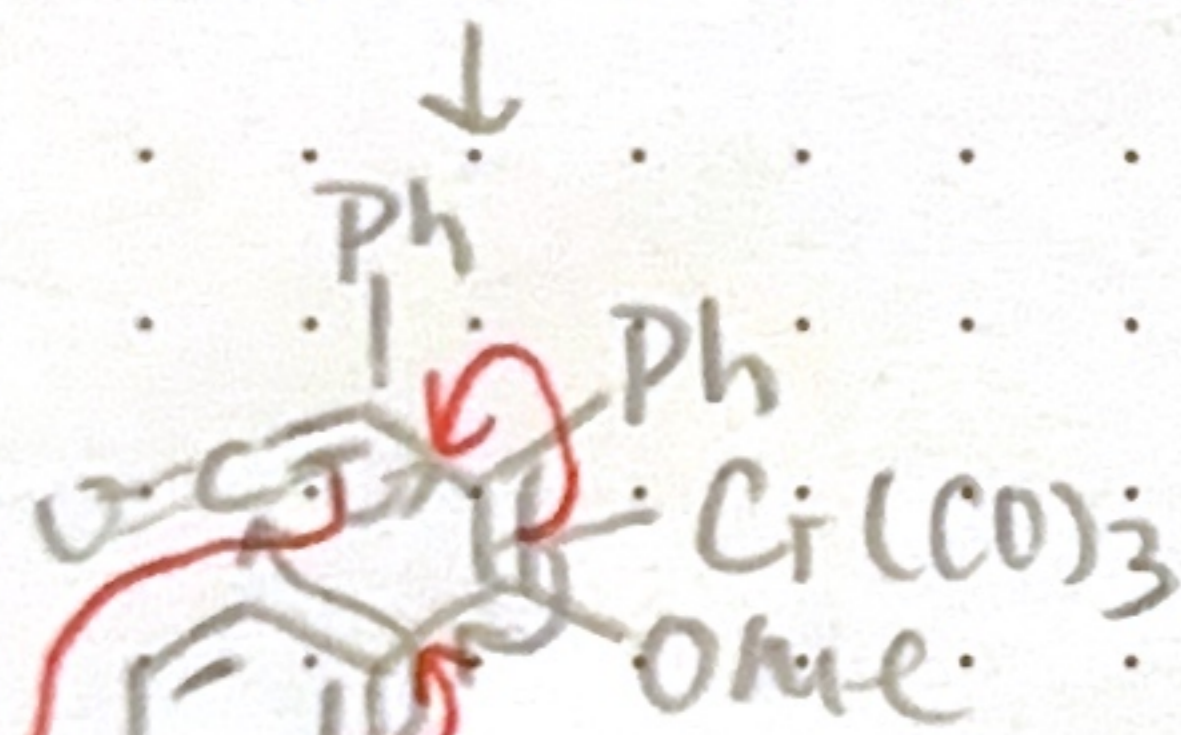
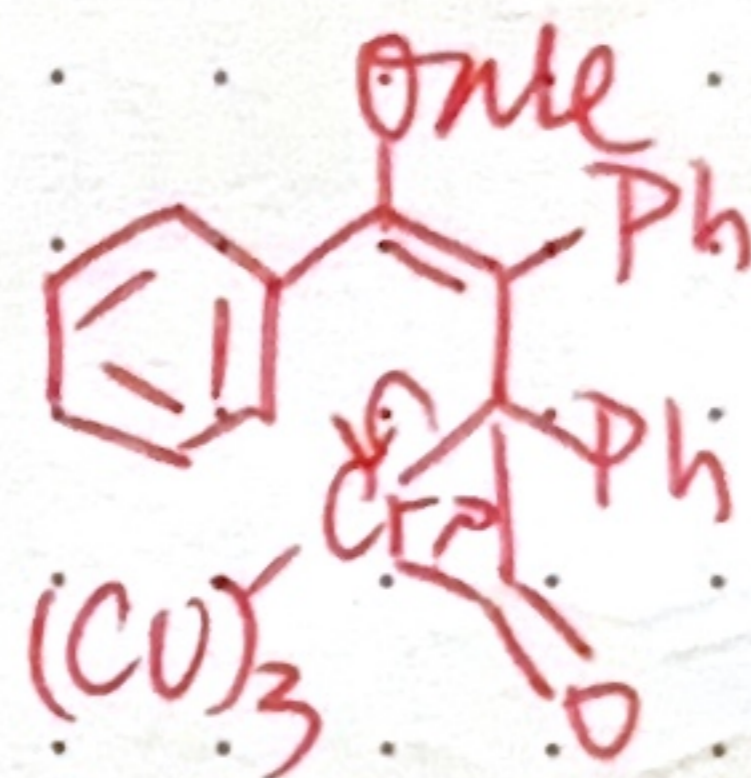
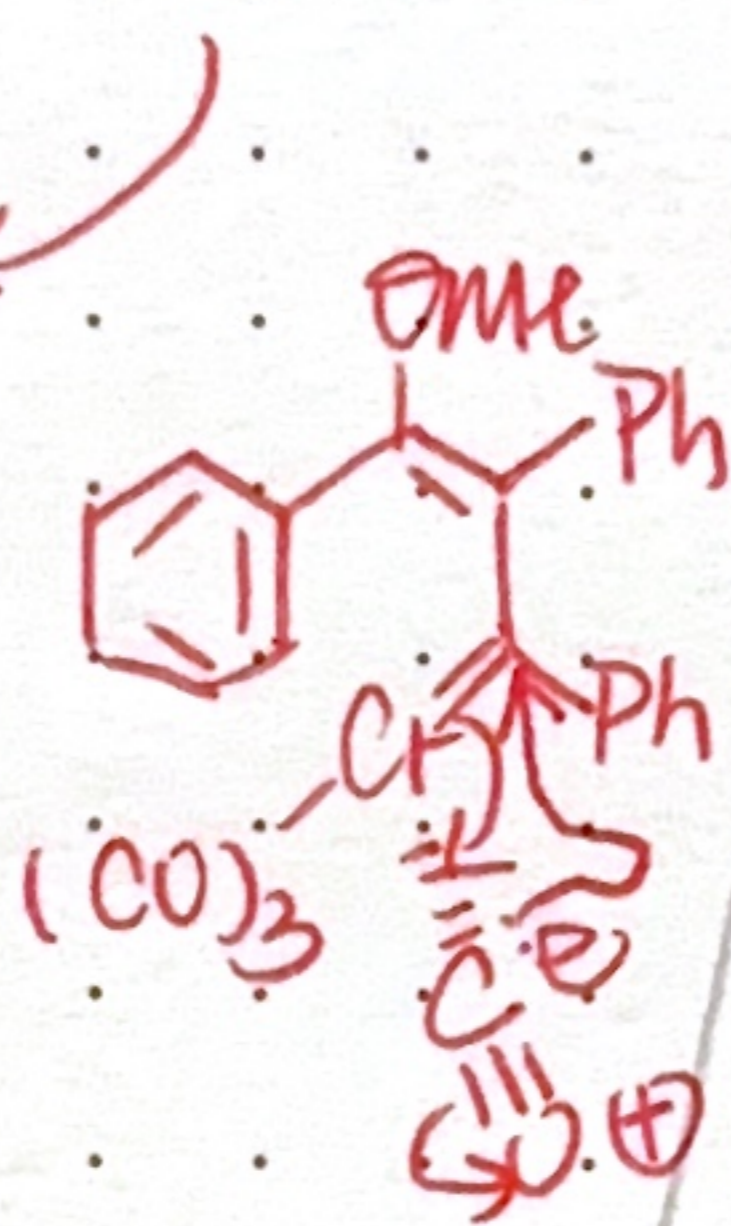
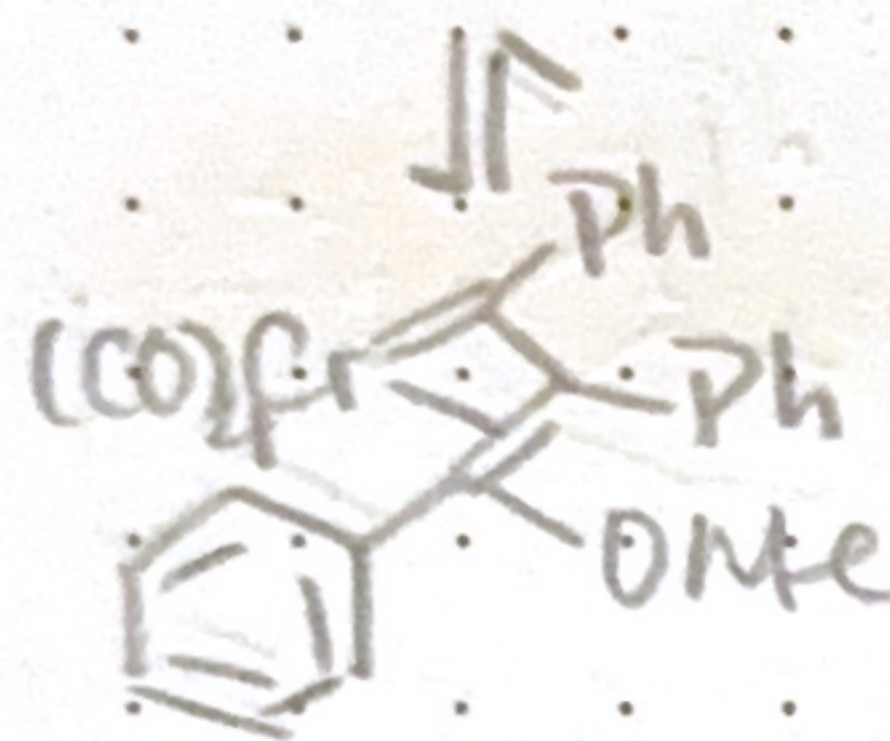




Hit: Cr's CO goes with dissociation first.

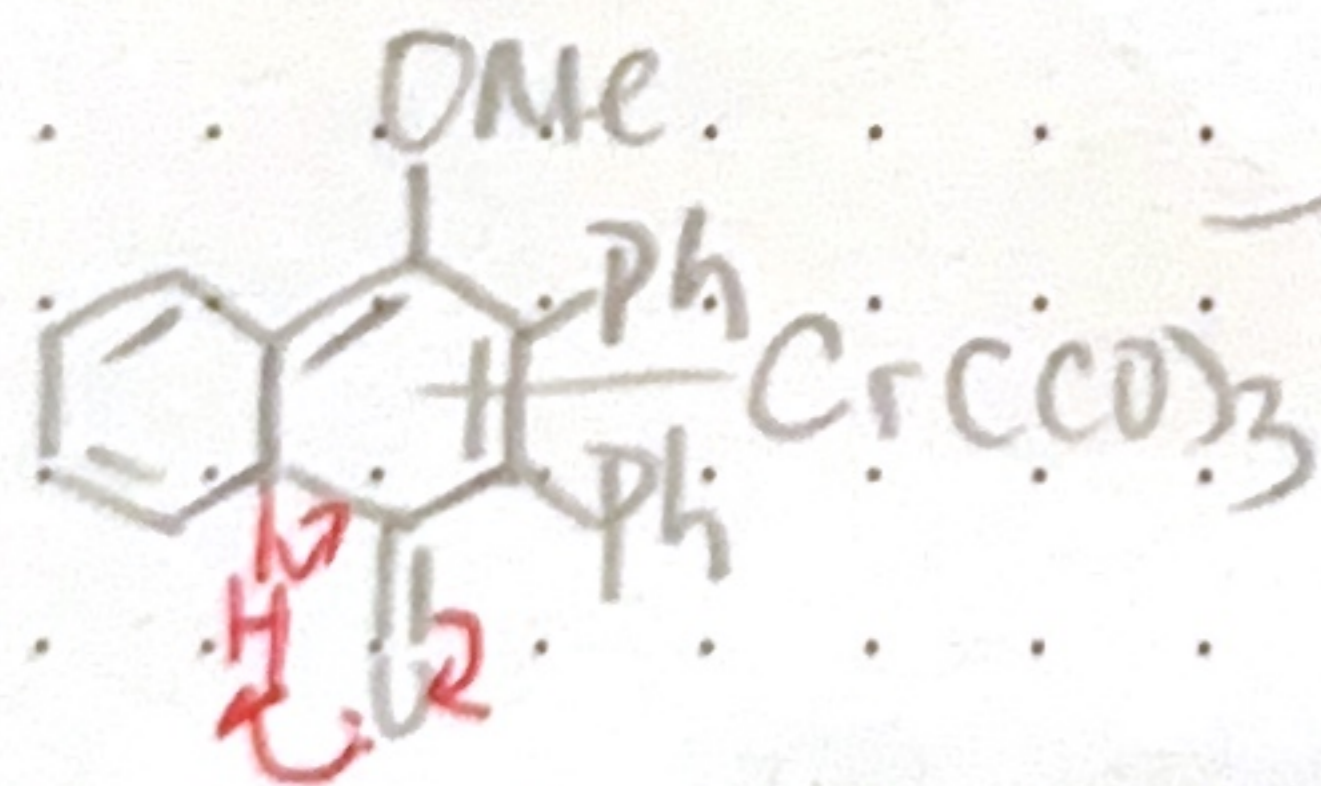


Hit: Alkyne metathesis of Fischer carbene.

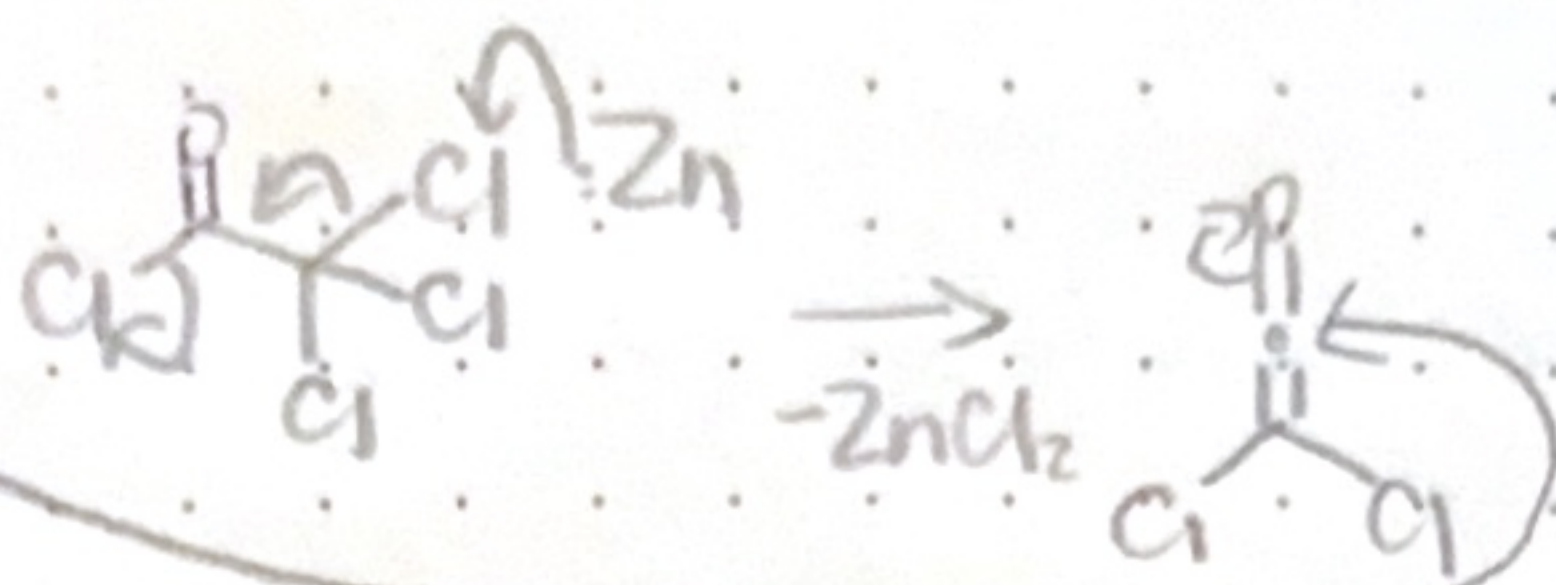
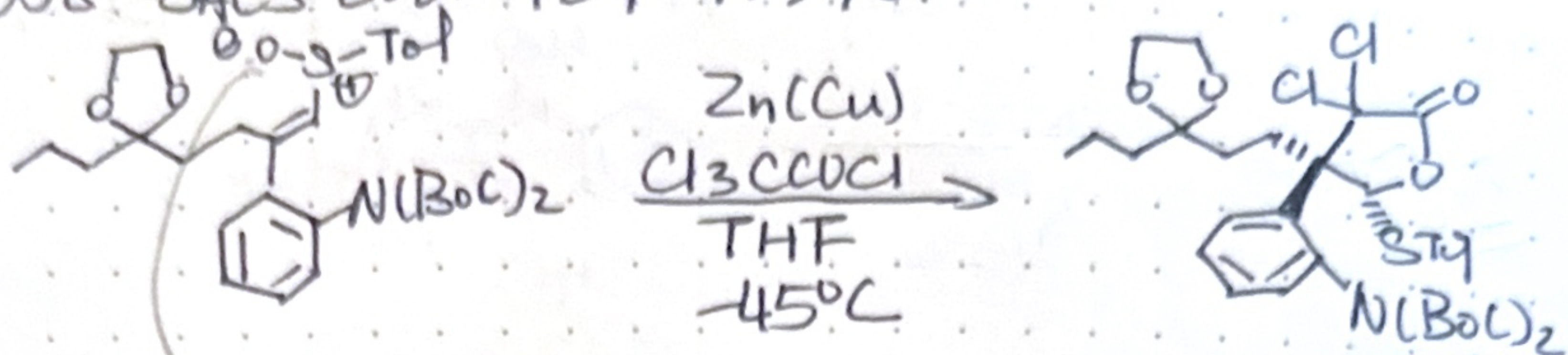


Reductive elim.

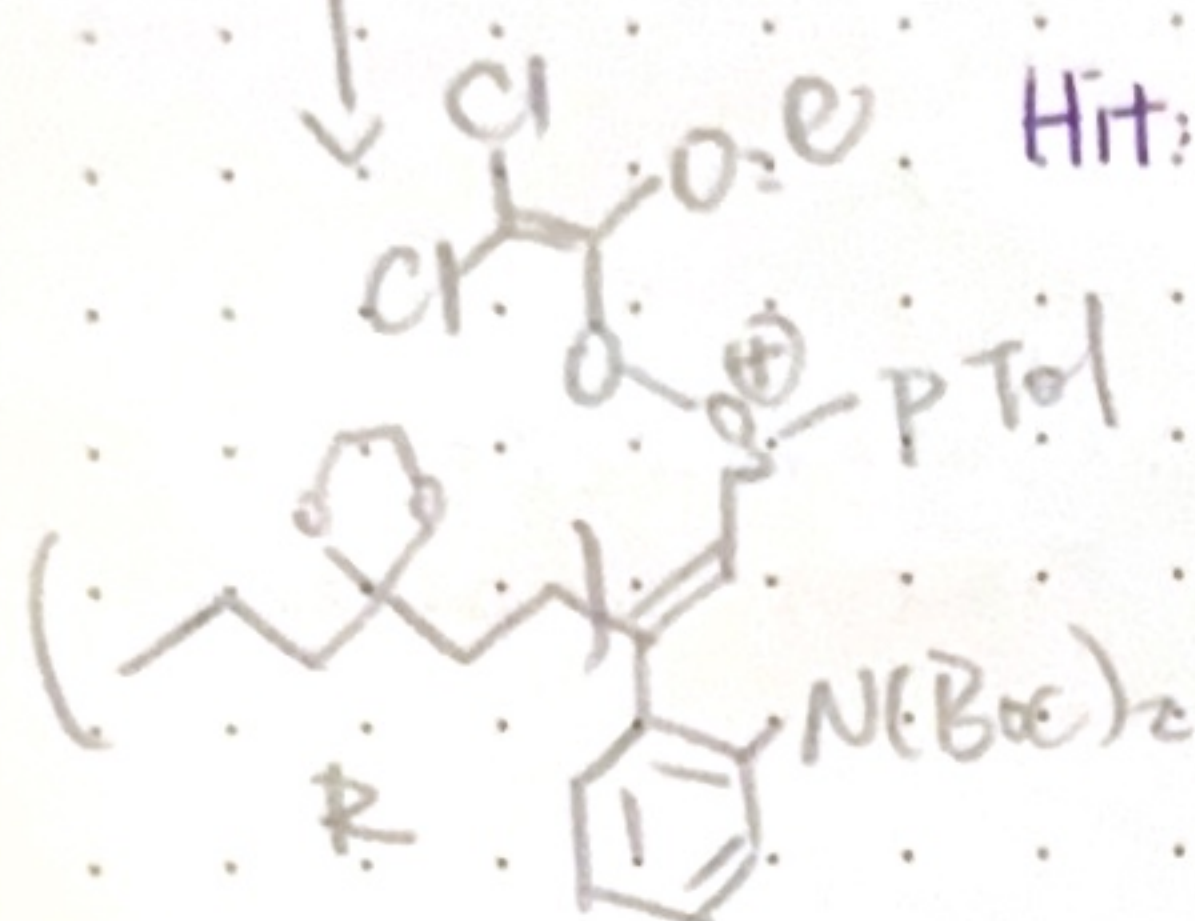
6e⁻
 \downarrow electrocyclic rxn.



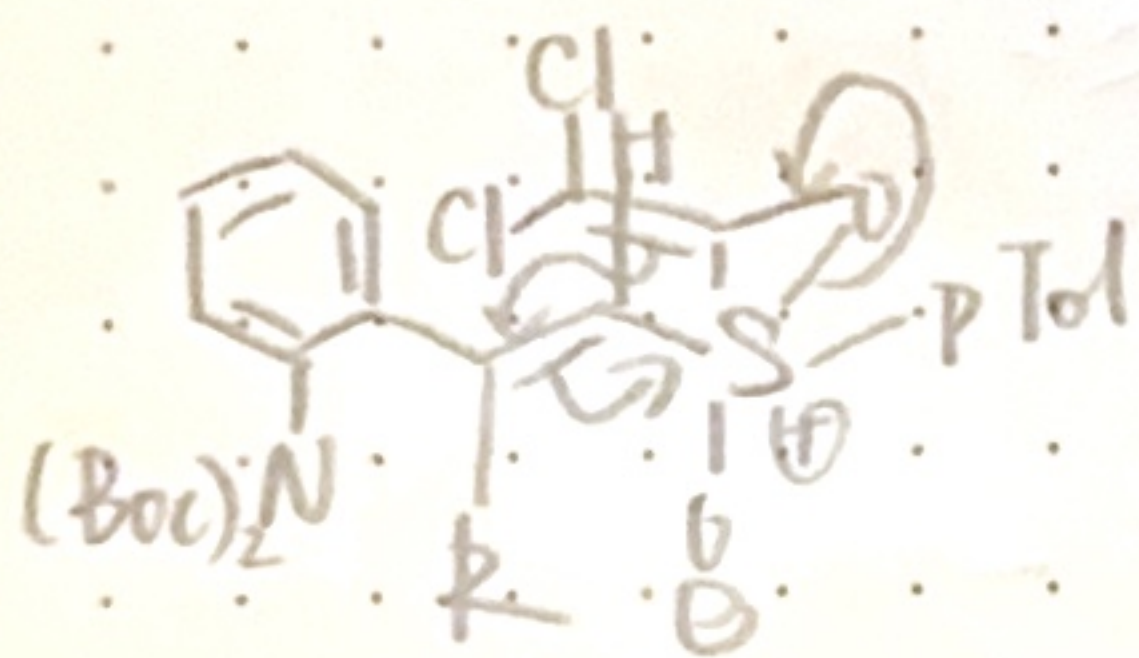
C 058 JACS 2002 124 13378



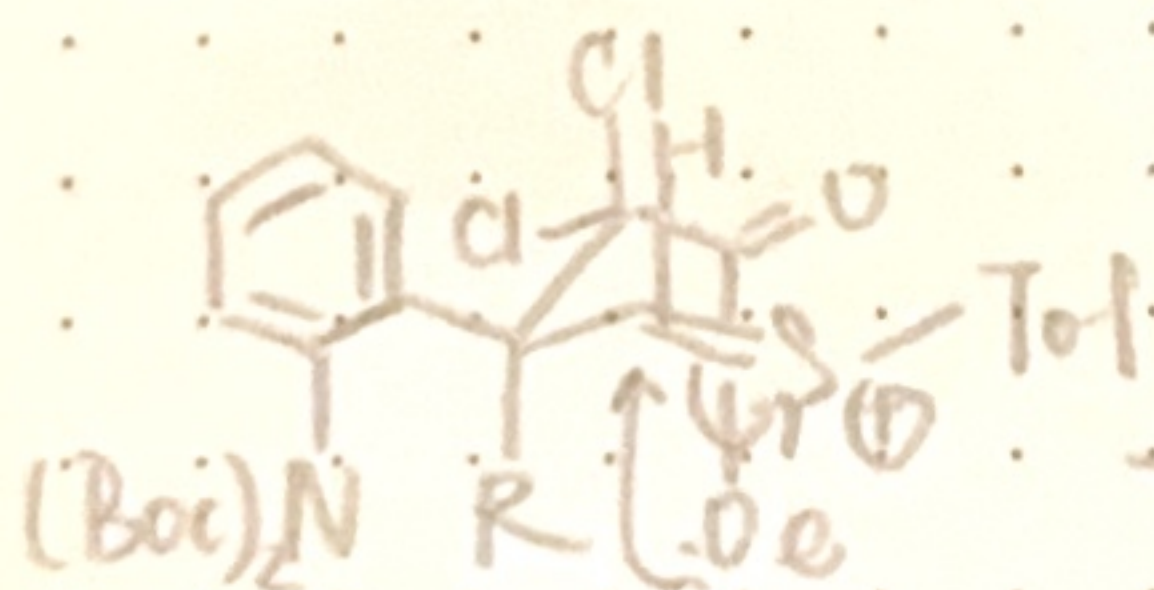
Hit: Generate dichloro ketone



III



↓ [3,3] Sigmatropic rearrangement



cyclization of carboxylate onto sulfenium ion